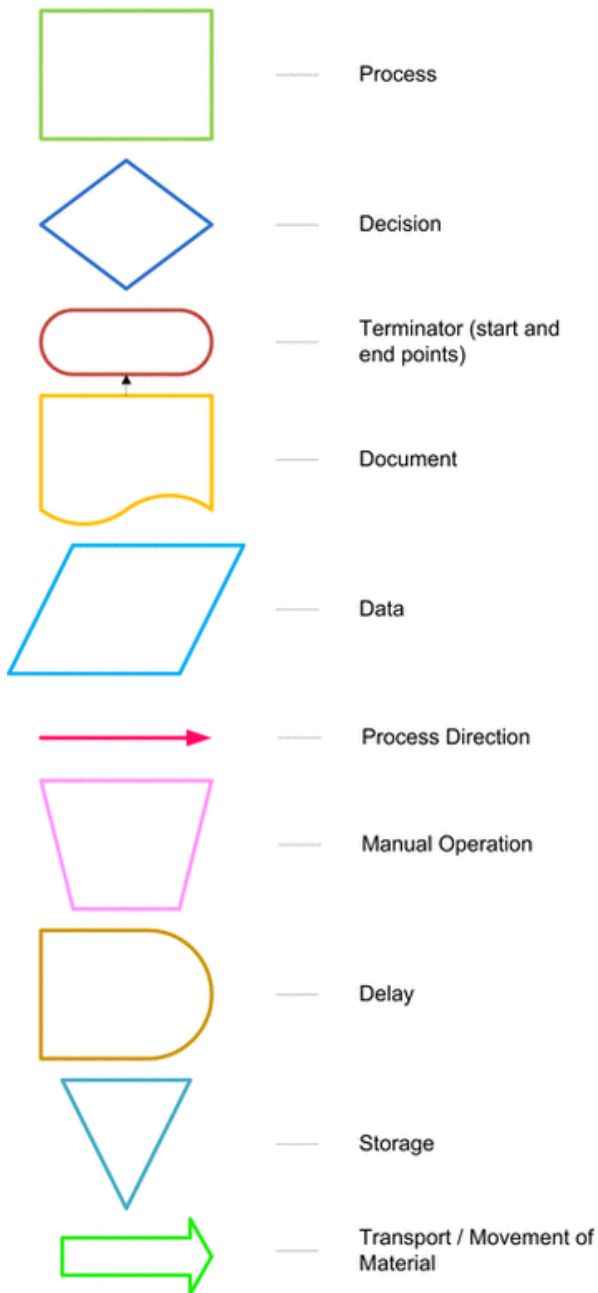


## Flowchart Symbols



Use **ONLY** the symbols to the left for your Circulatory and Respiratory Flow Chart.

1) Review the samples on the next couple of pages to see how these symbols are used to create a flow chart.

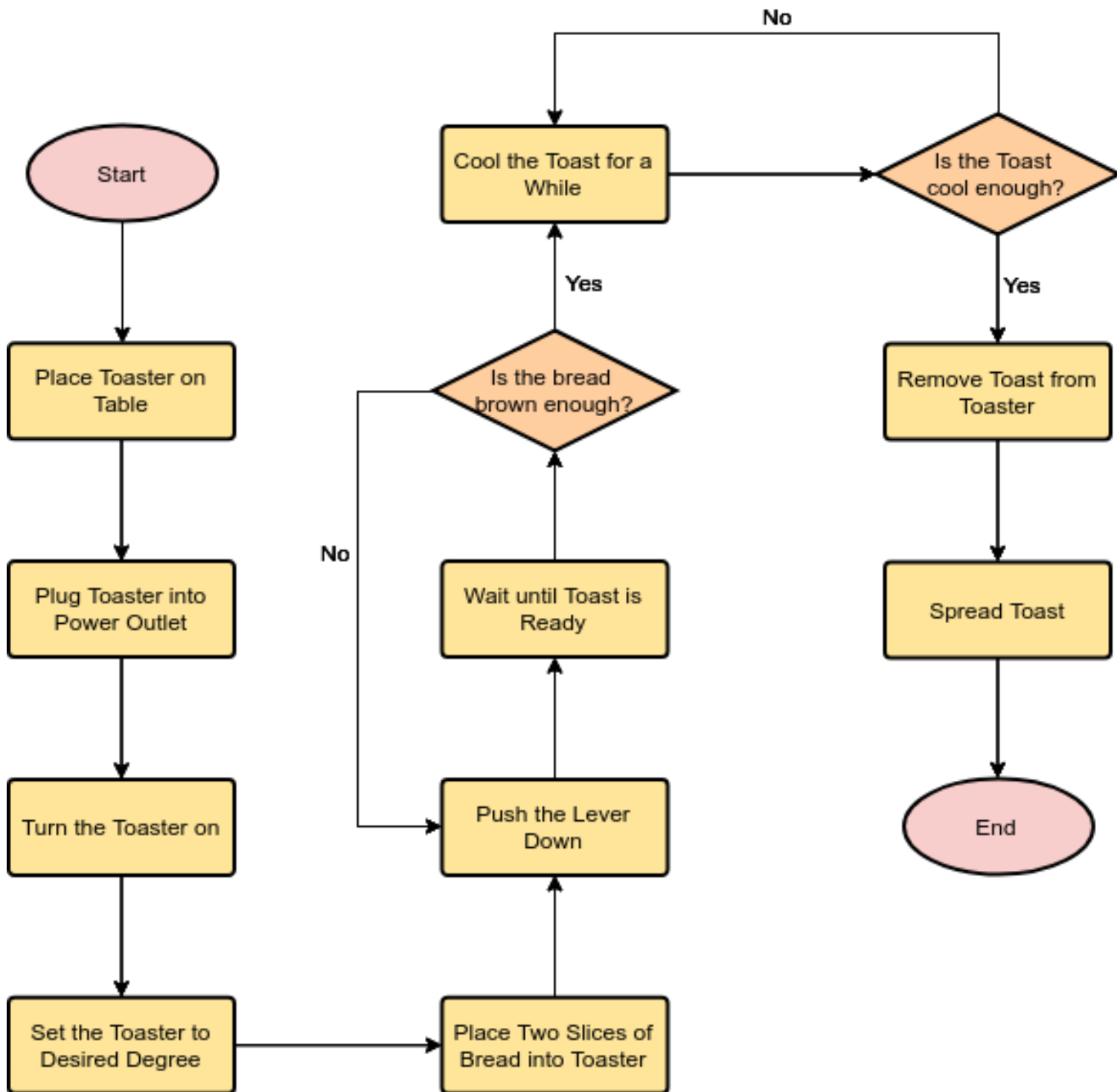
2) Using a BLACK or BLUE or RED pen, draw a flow chart on a blank piece of paper that represents the **movement of blood and its constituents as they travel through the circulatory and respiratory systems.**

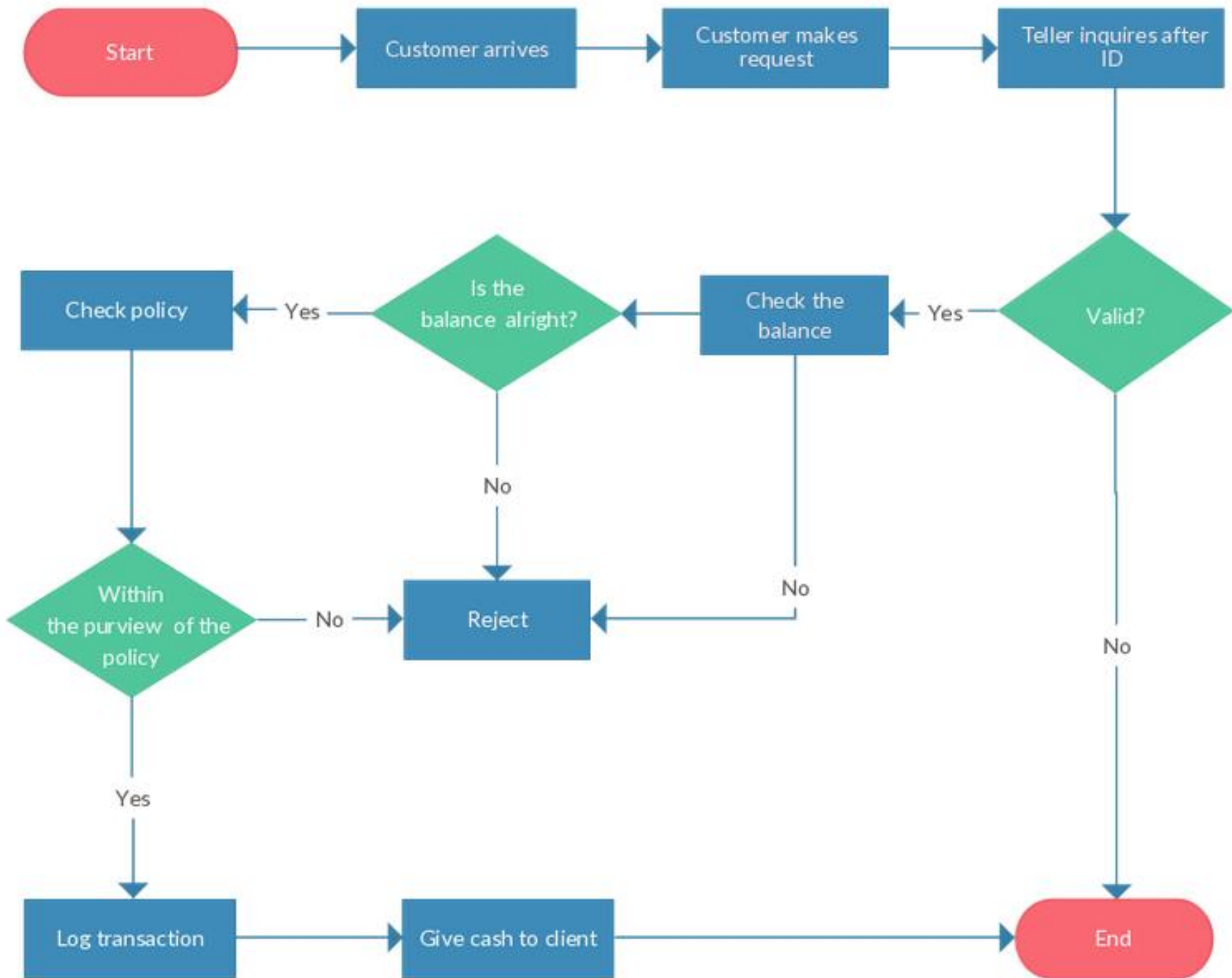
3) You may need to use more than one piece of paper. Just make sure there is a connection between them.

4) This can not be generated by any type of computer or printer device. I will only accept projects that are HAND DRAWN. You will be emailing me a picture of your hand drawn project by Thursday May 14, 2020

5) When I have had to create flow charts such as this, I found it helpful to make a list first and then turn that list into individual steps in the process. **Only One Thing Happens At Each Step In The Flow Chart**

6) You have 8 days, including a weekend, to create this chart so there is no reason to turn it in late.





*Support Process Flowchart Template*

# Baking Chocolate Chip Cookies

